

# Entry Rules

## Screenshot1

- Buy signal of a particular pair will be generated once all the following indicators agree (if pair is selected). (Refer to screenshot3,4,5)

- TDI

- Price line (green) up crosses signal line (red) -> 

TP	TC
■	■
- TDI point to 12-2 direction -> TDI momentum (TG) is larger than about 1.5 -> 

TG
2.7

  - $TG = TDI\_Price\_Current - TDI\_Price\_Previous$
- TDI Price Value (TV) should be less than 68 (overbought limit) -> 

TG	TV
2.7	51.2

- Stochastic

- Current Sto value is larger than previous Sto value -> 

Sto
P ■ C
46.9 54.5
- Current Sto value is less than Sto overbought limit ->

- HA Candle

- Current green candle should be the 1<sup>st</sup> or 2<sup>nd</sup> reversal candle -> 

h2	h1	h0	#
■	■	■	1

  - You can set the limit at HA Reversal Candle Index Limit
- Current candle size is larger than HA candle size threshold -> 

S
■

# Entry Rules

## Screenshot2

- Sell signal of a particular pair will be generated once all the following indicators agree (if pair is selected). (Refer to screenshot3,4,5)

- TDI

- Price line (green) down crosses signal line (red)-> 

TP	TC
■	■
- TDI point to 4-6 direction -> TDI momentum (TG) is less than about -1.5-> 

TG
-3.9
- $TG = TDI\_Price\_Current - TDI\_Price\_Previous$
- TDI Price Value(TV) should be larger than 32 (oversold limit) -> 

TG	TV
-3.9	48.9

- Stochastic

- Current Sto value is less than previous Sto value ->
- Current Sto value is larger than Sto oversold limit ->

Sto		
P	■	C
55.1		42.6

- HA Candle

- Current red candle should be the 1<sup>st</sup> or 2<sup>nd</sup> reversal candle ->
- You can set the limit at HA Reversal Candle Index Limit
- Current candle size is larger than HA candle size threshold ->

h2	h1	h0	#
■	■	■	■
		4.9	1

S
■

Screenshot3

2 TDI Momentum and Value

1 TDI Cross

3 Sto Confirmation

4 HA Candle Confirmation

Trading

Pair	Sprd	TP	TC	TG	TV	Sto	HA Candles	Buy	Sell	Symbol	Profit
						P					
AUDCAD	1.2			-2.8	45.0	59.1 56.1	h5 h4 h3 h2 h1 h0 # S			AUDCAD	0.00
AUDCHF	1.2			-0.7	47.2	80.2 76.3				AUDCHF	0.00
AUDJPY	0.5			-3.2	42.9	77.3 68.1				AUDJPY	0.00
AUDNZD	1.4			-0.9	48.9	72.4 65.0				AUDNZD	0.00
AUDUSD	0.4			-1.9	50.9	80.9 75.2				AUDUSD	0.00
CADCHF	1.0			1.2	50.0	73.4 71.8				CADCHF	0.00
CADJPY	1.0			-1.8	45.5	64.9 59.0				CADJPY	0.00
CHFJPY	1.3			-3.3	44.1	48.0 40.6				CHFJPY	0.00
EURAUD	0.8			0.2	51.2	26.5 31.3				EURAUD	0.00
EURCAD	1.0			-2.6	46.3	43.2 43.4				EURCAD	0.00
EURCHF	0.7			-1.5	45.0	76.2 69.5				EURCHF	0.00
EURGBP	0.5			-0.0	53.3	39.7 41.7				EURGBP	0.00
EURJPY	0.7			-4.4	41.2	72.9 60.7				EURJPY	0.11
EURNZD	2.6			-0.6	50.2	48.7 55.4				EURNZD	0.00
EURUSD	0.1			-2.1	52.7	87.5 86.6				EURUSD	0.00
GBPAUD	1.8			-0.0	48.3	39.0 38.4				GBPAUD	0.00
GBPCAD	1.2			-2.2	44.0	48.1 44.5				GBPCAD	0.00
GBPCHF	1.6			-0.6	45.4	80.0 74.6				GBPCHF	0.00
GBPJPY	1.1			-3.0	41.7	70.3 62.2				GBPJPY	0.19
GBPNZD	3.3			-0.6	47.7	63.5 62.5				GBPNZD	0.00
GBPUSD	0.4			-1.7	49.5	85.4 82.6				GBPUSD	0.00
NZDCAD	1.2			-2.3	45.9	29.2 29.6				NZDCAD	0.00
NZDCHF	1.4			-0.1	47.8	85.2 59.3				NZDCHF	0.00
NZDJPY	1.3			-2.7	43.4	58.8 49.3				NZDJPY	0.00
NZDUSD	0.9			-1.1	51.7	69.4 65.4				NZDUSD	0.00
USDCAD	0.5			0.3	43.6	14.7 12.4				USDCAD	0.00
USDCHF	0.6			1.5	43.3	28.7 23.1				USDCHF	0.00
USDJPY	0.4			-1.6	41.3	27.7 19.9				USDJPY	0.00

AutoTrade

ON

AllNoneEURUSDGBPJPYAUDCADNZDCHF

Profit Baskets= 0

Basket TP = \$ 15.00

Loss Baskets= 0

Basket SL = \$- 15.00

Highest= \$ 0.00

Lowest= \$- -0.31

0.30

CLOSE ALLCLOSE PROFITCLOSE LOSS

# Screenshot4

**Trading**

Pair: GBPJPY

Sprd: 1.1

TP: 3.0

TC: 41.7

TG: 70.3

TV: 62.2

Sto: 11.9

#: 2

HA Candles: h5, h4, h3, h2, h1, h0

S: 2

Buy: 0.00

Sell: 0.01

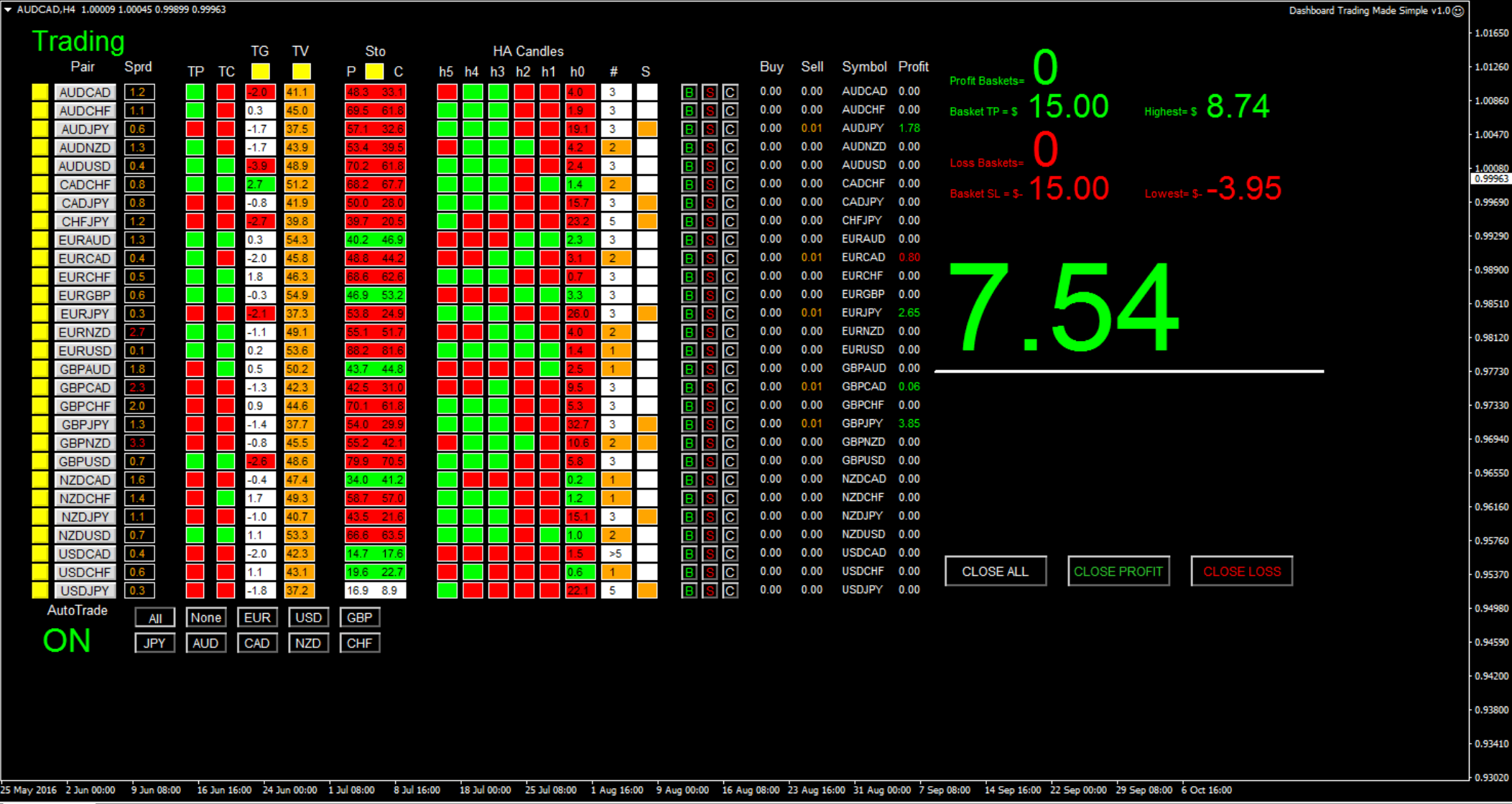
Symbol: GBPJPY

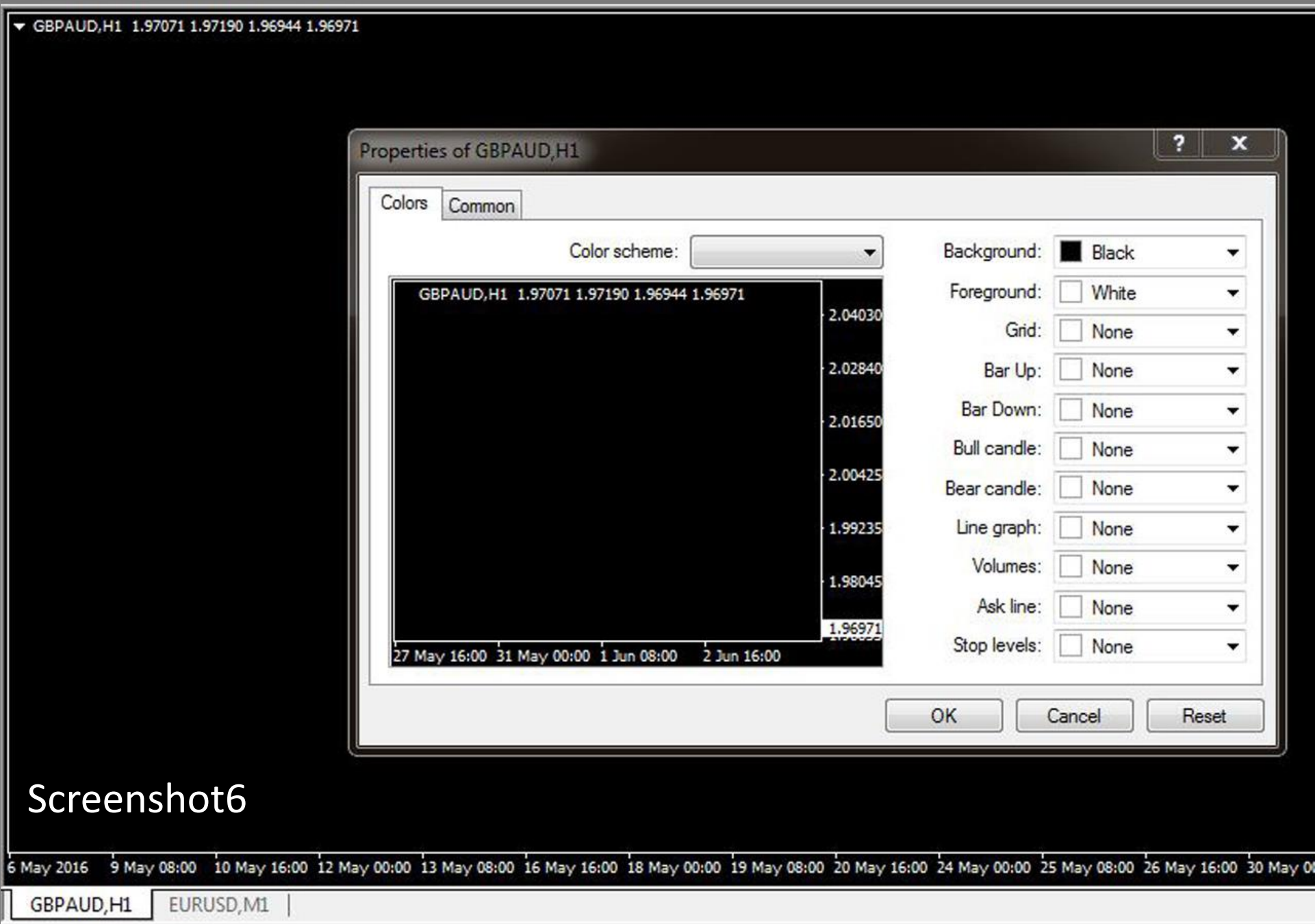
Profit: 0.19

Profit RiskRate= 0

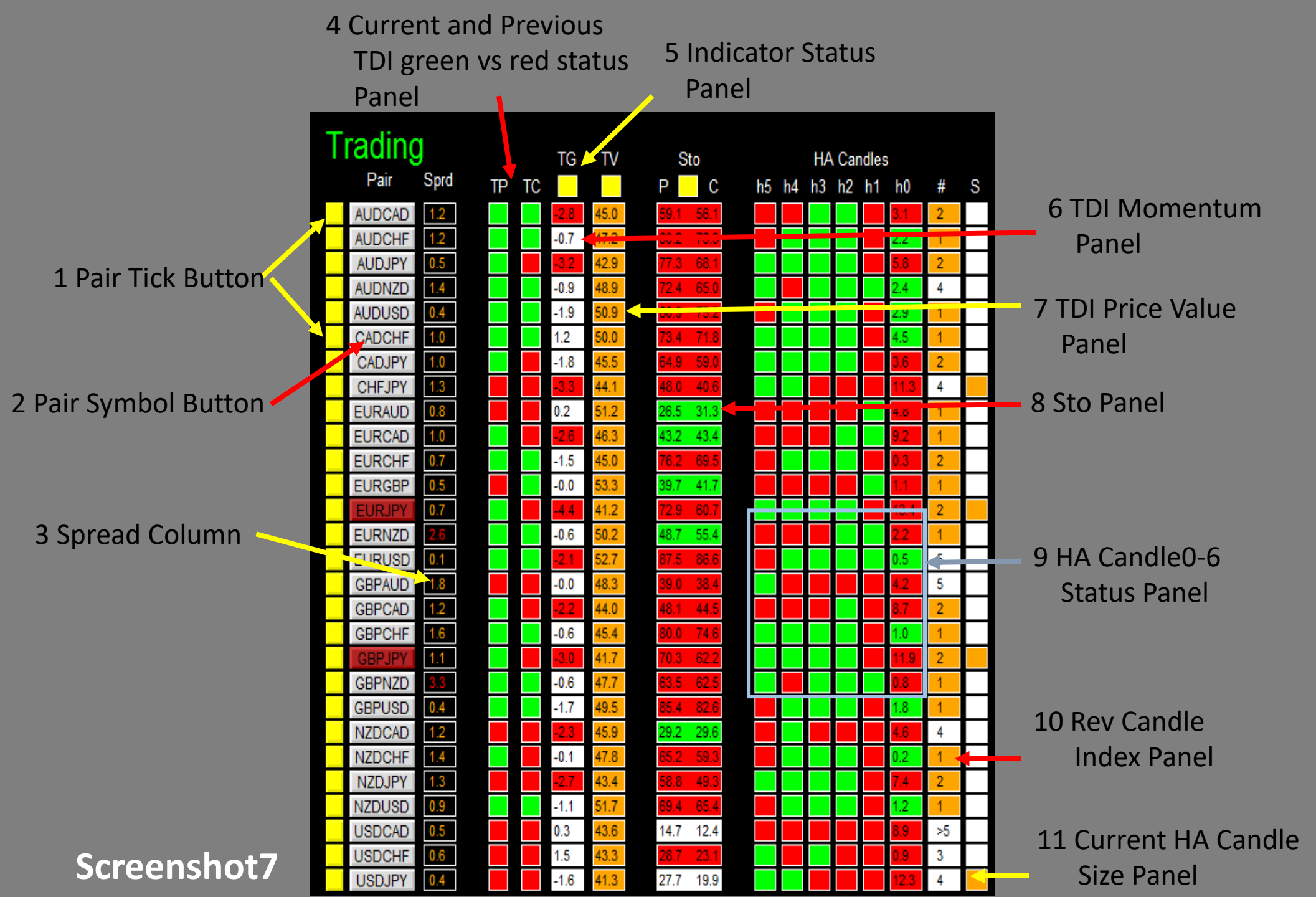


# Screenshot5





Screenshot6







A 3x20 grid of characters 'B', 'S', and 'C'. The first column contains 20 'B's, the second 20 'S's, and the third 20 'C's. A yellow arrow points to the 10th row, and a red arrow points to the 7th row.

0.00

← AUDNZD

0.00



# Screenshot8



19 Profit Baskets

Profit Baskets=

0

20 Basket TP

Basket TP = \$

15.00

Highest= \$

0.00

21 Basket Highest

22 Loss Baskets

Loss Baskets=

0

23 Basket SL

Basket SL = \$-

15.00

Lowest= \$-

0.00

24 Basket Lowest

25 Current Basket  
Profit

0.00

## Screenshot9

26 Close All

CLOSE ALL

CLOSE PROFIT

CLOSE LOSS

27 Close Profit

28 Close Loss

Trading

29 Session Monitor Panel

Screenshot10

30 AutoTrade Monitor Panel

31 Pair/Currency Selection Button

AutoTrade

ON

All

None

EUR

USD

GBP

JPY

AUD

CAD

NZD

CHF

Expert - Dashboard Trading Made Simple v1.1

About Common Inputs

Variable	Value
Use AutoTrade	false
Send Alert upon Signal	false
Send Notification upon Singal	false
Single pair TP in pips (0=no TP)	50.0
Single pair SL in pips (0=no SL)	50.0
Use TDI Momentum Indi	true
TDI Momentum Threshold	2.0
Use TDI Overbought Oversold Limit	true
TDI Overbought Limit	68
TDI Oversold Limit	32
Use Stochastic Indi	true
Stochastic K Period	8
Stochastic D Period	3
Stochastic Slowing Value	3
Stochastic Applied Price	STO_Close_Price
Stochastic Applied Method	STO_SMA
Stochastic Overbought Area	80.0
Stochastic Oversold Area	20.0
HA Candle Size Threshold for Trade	10.0
HA Reversal Candle Index Limit for Tr...	2
Magic Number	12345
Lot Size	0.01
Basket TP in \$	15
Basket SL in \$	15
Max Spread	2.0
Close all trades after session(s)	false
Select false on all sessions to active n...	Non-Stop Session

Load Save

确定 取消 Reset


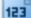
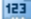





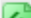

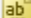






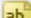

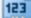





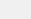
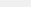
Once alert/notification of a particular pair has been sent, the next alert/notification of that pair will be sent after 5 minutes upon signal.

The value is calculated by (current TDI green – previous TDI green)

No buy when TDI>limit

No sell when TDI<limit

About Common Inputs

Variable	Value
 HA Candle Size Threshold for Trade	10.0
 HA Reversal Candle Index Limit for Tr...	2
 Magic Number	12345
 Lot Size	0.01
 Basket TP in \$	15
 Basket SL in \$	15
 Max Spread	2.0
 Close all trades after session(s)	false
 Select false on all sessions to active n...	Non-Stop Session
 UseSession1	true
 Session1 Start Time	00:00
 Session1 End Time	23:59
 session1comment	AutoTrade SESSION1
 UseSession2	false
 Session2 Start Time	00:00
 Session2 End Time	23:59
 session2comment	AutoTrade SESSION2
 UseSession3	false
 Session3 Start Time	00:00
 Session3 End Time	23:59
 session3comment	AutoTrade SESSION3
 TDI Sto HA Candle Timeframe	DB_H4
 TimeFrame of new chart	4 Hours
 suffix	
 prefix	
 x_axis	50
 y_axis	80

Basket means all active (open) positions opened by this dashboard with the same magic number. The basket profit is the total profit of all these active positions

Load

Save

确定

取消

Reset

# Backup Slides

- B

## **Note**

**Note1:** Basket means all active (open) positions opened by this dashboard with the same magic number. The basket profit is the total profit of all these active positions. e.g. Dashboard open 10 positions (not close yet), each order has a profit of \$2. So the total profit is  $10 * \$2 = \$20$ . If the basket take profit is \$20, then the basket TP will be hit.

**Note2:** autotrade will open at most 1 position per pair based on signal generated. If signal occurs but position already exists for a particular pair, no order will be sent. However, you can manually click on 'buy' and/or 'sell' button to any number of positions you want (click once send one order).

**Note3:** Once alert/notification of a particular pair has been sent, the next alert/notification of that pair will be sent after 5 minutes upon signal. The alert and notification are implemented in this way to make sure you receive them once during a certain period instead of numerous alerts/notification coming to you continuously.

## **Screenshot12**